

JOHN GEORGE KOONTZ

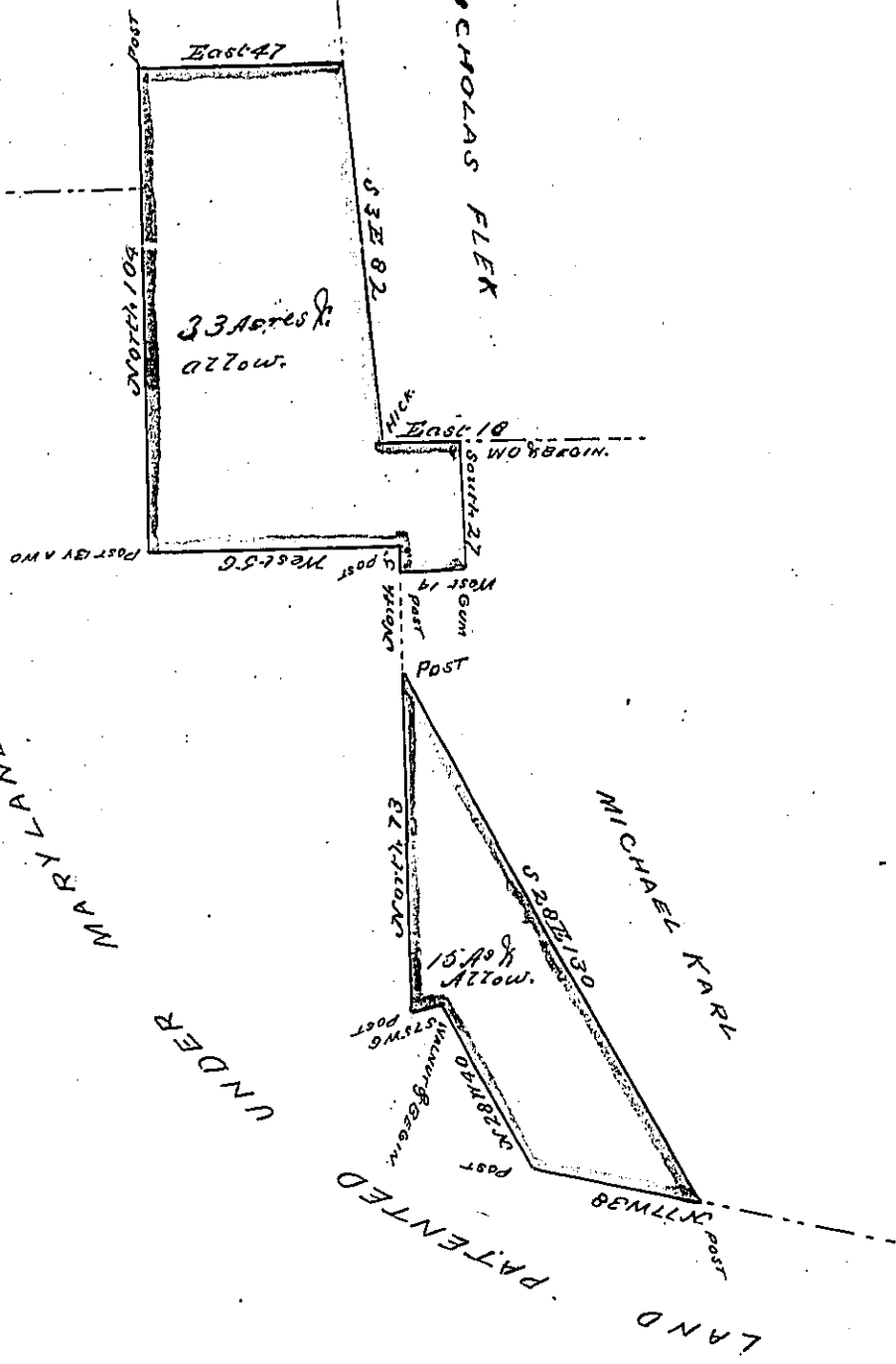
JOHN DIGGES

TO MARYLAND

UNDER

PATENTED

LAND



A Draught of Two Tracts of Land both situate in  
 Manheim Township one whereof contains Thirty three  
 acres & the allowance proportional to six pcent, the  
 other contains Fifteen acres and the Allowance pro-  
 portional to six acres pcent for Roads & Highways.  
 Surveyed for Thomas Armor the 1<sup>st</sup> day of January  
 1760 in pursuance of a warrant bearing date the 18<sup>th</sup>  
 day of June 1759

P. George Stevenson D.S.

Nicholas Scull Esq.  
 Surveyor Genl.

IN TESTIMONY that the above is a copy of the original remaining on file in the  
 Department of Internal Affairs of Pennsylvania, made con-  
 formably to an Act of Assembly approved the 16th day of  
 February, 1833, I have hereunto set my Hand and caused  
 the Seal of said Department to be affixed at Harrisburg, this

Third day of January 1855

J. Simpson Africa,  
 Secretary of Internal Affairs